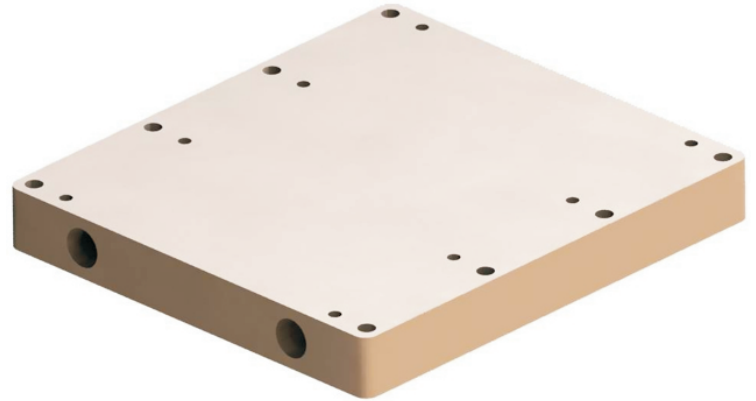


HIGH PERFORMANCE Thermal Management

Q-CHILL Internal Fin Technology

MQT1614 Liquid Cooled Cold Plate

The MQT1614 is a liquid cooled cold plate specifically designed for challenging power density applications requiring a compact and light-weight design. The advanced design of the MQT1614 allows for efficient heat transfer between the cold plate contact area and the power module base plate.

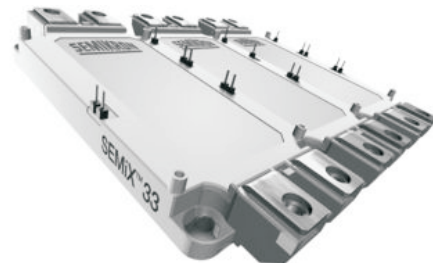


Applications

- Electric Vehicle Motor Drives
- Wind Turbines
- Solar Inverters
- Industrial Motor Controls
- Power Converters
- Induction Heaters
- Rail Traction Systems
- Auxiliary Vehicle Systems
- High Performance Motor Sport

Compatible Power Module Packages

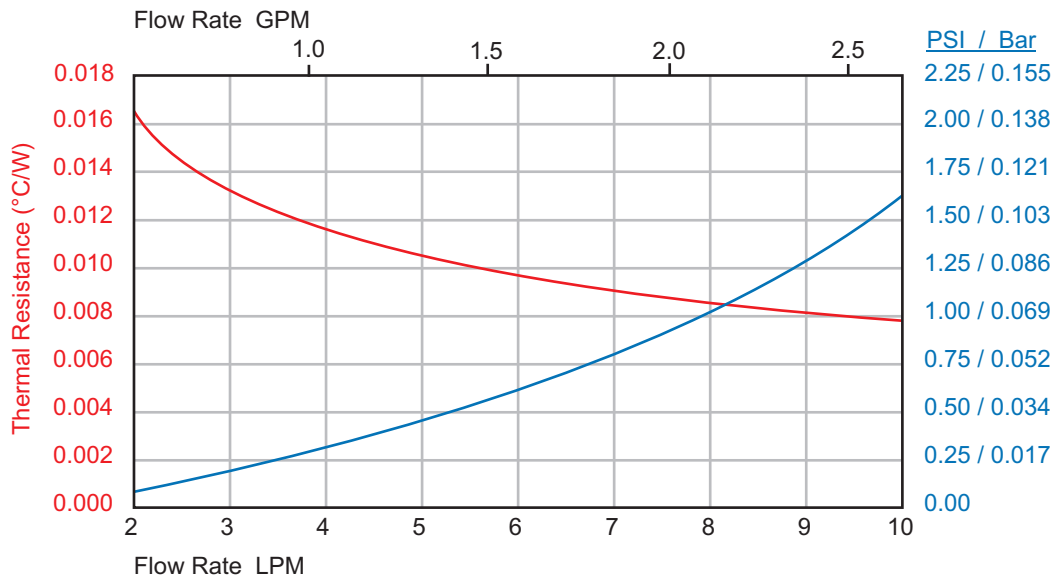
- SEMIKRON SEMiX® 33
- INFINEON EconoPACK™ +
- FUJI Semiconductor M629
- POWEREX Intellimod™ L-Series



Features

- 3000 Watt heat rejection @ 8 LPM with a 22.5°C temperature rise from the fluid inlet to the maximum cold plate temperature
- Patent pending Q-CHILL internal fin technology provides for a more uniform top cold plate surface temperature
- Low pressure drop for reduced system cost (1.59 PSI @ 8 LPM)
- Low cost proven aluminum solution with performance comparable to copper based solutions
- Compact and light (1.1 kg)
- Compatible with industry accepted coolants
- Metallurgical seal for robustness and a high pressure rating

PERFORMANCE CURVES



Cooling Fluid:
50% Ethylene Glycol
50% Water

Thermal Resistance values use the difference between the Maximum Cold Plate Temperature and the Fluid Inlet Temperature

Pressure Drop Includes
1/4 - 18 NPT Hose Barb Fitting

MECHANICAL OUTLINE

